

# The King's Advice

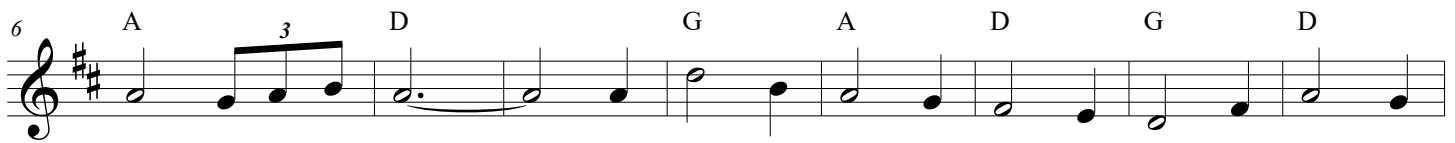
Tune: The King of Love

Lyric: John Valade - Adapted from Matthew 7:13-27

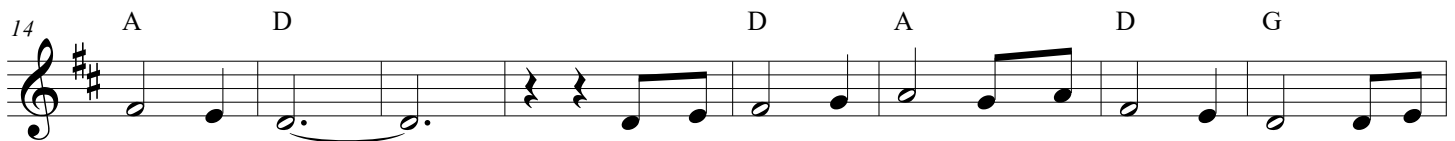
April 13, 2020



En - ter through the nar - row gate, for wide are the gate and  
 Watch out for false pro - phets in sheep's clothes but are in ward  
 Not all those who say to me, "Lord, Lord," will en - ter my  
 Those who hear Christ's words and prac - tice them are like those who



road lead - ing to death. Most en - ter there, but nar - row are the gate and  
 ly vo - ra - cious wolves. You will by their fruit re - cog - nize that their hearts  
 Heav - en - ly King - dom. They'll say, "We pro - phe - sied and drove out de - mons  
 build up - on a rock. When rain and floods and wind rise up they can't bring



road to life. There are few who seek the nar - row gate, few - er  
 are cor - rupt. Do you go to thorn - bush - es to pick grapes? Or to  
 in your name." They'll say, "Did we not per - form mir - a - cles and pro -  
 their house down. But the ones who hear these words of Christ are like



still who find the nar - row road. And few - er still who walk that road un -  
 this - tles for har - vest - ing figs? A good tree on - ly bears good fruit. A  
 claim your name to all the world?" I will say, "I do not know you, Be  
 those who built up - on the sand. When rain or flood or wind come up their



til they reach the goal.  
 bad tree is cut down.  
 gone, you e - vil ones!  
 house falls with a crash!